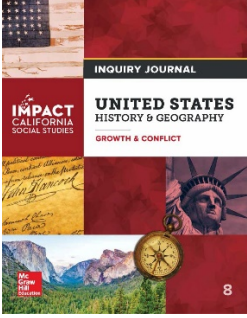





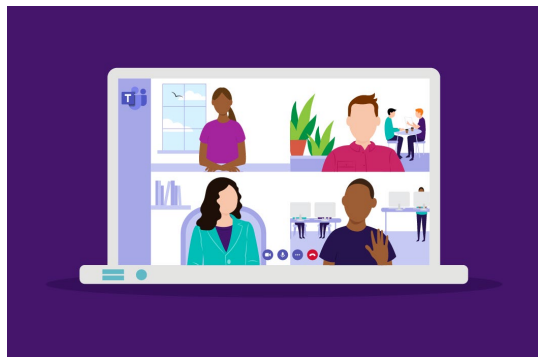
Class Description: 8th Grade U.S. History
Mrs. Sweeney Room 16

Focus	Description
<p align="center">Standards Based Curriculum Overview:</p>	<p>The 8th grade year is a study of critical events, issues and individuals in United States History from the founding of the nation to 1914. This class will cover the Age of Exploration, the colonial period and the development of the Constitution, the impact of the Westward Movement, the struggles of the Civil War and Reconstruction, and the impact of Industrialization.</p>
<p align="center">District Adopted Text:</p> 	<p><u>Impact California Social Studies: United States History & Geography</u></p> <p>Students will be assigned a textbook. The textbook stays home, and it is to be used to complete assignments. Students are fully responsible for this book. If lost or damaged, students will be responsible for the cost of the textbook. Students may also access the digital version at:</p> <p>http://go.fresnou.org/impact</p> <p>Sign in with your school email address and password (@fresnou.org)</p>
<p align="center">General Expectations:</p>	<p>The eighth grade U.S History course utilizes rigorous curriculum and strategies. Students will be expected to participate in higher level skill development and learning strategies in order to attain mastery of the California History/Social Science Standards in eighth grade.</p>
<p align="center">CLASSROOM PROCEDURES and EXPECTATIONS:</p> 	<ul style="list-style-type: none"> ● Cellphones and personal electronic devices are only allowed to be used for educational purposes and at teacher’s directive. At all other times, devices should be out of sight and off. ● Have your agenda at all times. Write agenda items listed on board or screen on a daily basis. Agenda checks will be made weekly. ● Use the bathroom before coming to class. You will be allowed to leave class to go to the restroom 5 times per quarter. Agenda will be used as pass to leave the classroom. Exemptions to bathroom rule will be made

in emergency cases, **however students will make up time out of class at lunch.**

- **Tardy Policy:** Professional behavior includes punctuality (arriving to class on time). Students who demonstrate a pattern of tardiness will be assigned class detention in order to make up for lost instructional time. Excessive tardiness will be addressed through the Scandinavian Restorative Discipline Policy **This includes lining up for class. Not in line equals a tardy.**
- **Teacher dismisses the students, not the bell.** There are often important reminders that need to be stated as well as ensuring the classroom is clean before dismissal.
- Need to sharpen a pencil? **Students are expected to wait until direct instruction is complete to ask for permission. Raise pencil and the teacher will allow you to sharpen pencil.** You have a mechanical pencil but no led? Ask a neighbor prior to class or quietly during independent or group work. Forgot a pencil? **I will provide you one, but you need to grab one from bucket prior to instruction or wait until an appropriate time to grab one.**
- Drink water before coming to class. You may bring a **water bottle** to class, but it must be kept in your backpack or closed on the table.
- Come prepared to work with **ALL** your materials.
- **Be positive.** Remember school is a safe learning environment.
- **Be respectful.** That includes respect towards adults, classmates, and school property.
- Finally, **be attentive** and do not talk when the teacher is giving instructions or classmates are sharing. **Please raise your hand to add to conversation or ask a question.**

In the case that we should ever go to a virtual or simultaneous setting:



Once you log on to Office 365 you will also have access to your district email account. Just click on the Outlook icon.



Virtual class meetings will take place on Microsoft Teams. Assignments will also be posted and submitted on Microsoft Teams. You may download the Microsoft Teams application on your device or log in to your Office 365 account.

Follow the steps below to access Microsoft Teams.

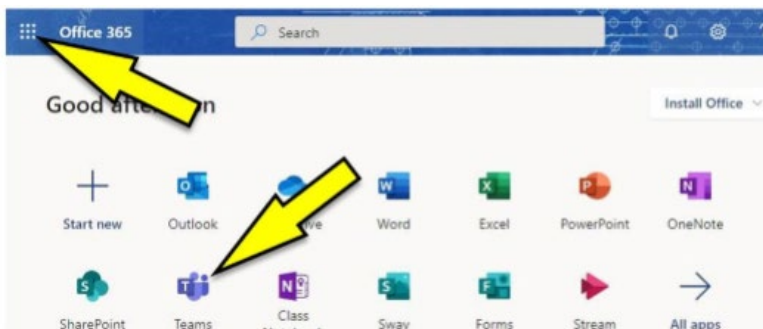
Step 1: Open your internet browser

Step 2: Go to <https://www.office.com>

Step 3: Click sign in

Step 4: Sign in with your school email address and password (@fresnou.org)




Step 5: Click on the Teams icon or click on the waffle to find it.



Step 6: Select the appropriate class Team name.

Here is a helpful video that shows the login process and Teams features:

<https://youtu.be/qx8xHpRMFHU>

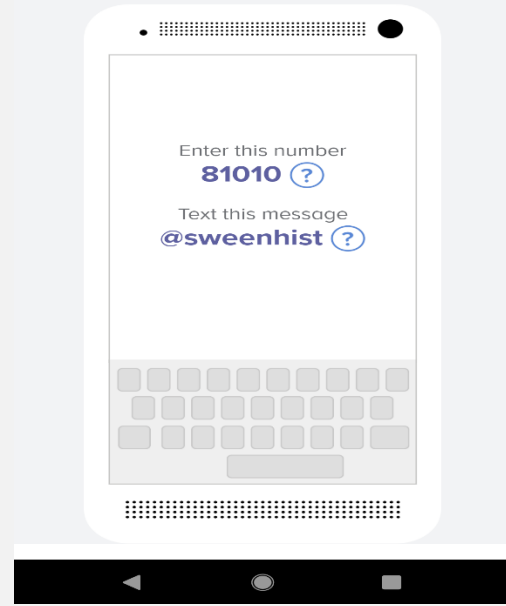
<p>Digital Citizenship:</p> 	<p>Digital citizenship refers to responsible technology usage, and teaching digital citizenship is essential to helping students achieve and understand digital literacy, as well as ensuring cyberbullying prevention, online safety, digital responsibility, and digital health and wellness.</p> <p>To be a good digital citizen includes the responsible use of technology. Students are to act in ways that are safe, legal and ethical. This includes positive interactions with others online, keeping personal information private, and respecting the work of others. A good digital citizen will not participate in and will report online bullying, harassment or hate speech.</p>		
<p>Grading Policy:</p> 	<p>Grades will be based on a point system. Point totals will vary by standard and quarter.</p> <p>Grades will be based on the following:</p> <ul style="list-style-type: none"> ● Daily assignments and HW ● Test results ● Quiz results ● Projects ● Writing assignments/ DBQ's ● Essays 		
<p>Grading Scale:</p> 	<table border="0"> <tr> <td data-bbox="792 1297 1013 1482"> <p>100% -90% = A 89% - 80% = B 79% - 70% = C 69% - 60% = D 59% - 0% = F</p> </td> <td data-bbox="1105 1297 1468 1478" style="border: 1px solid black; padding: 5px;"> <p>*The Grading Scale is subject to change. The teacher will inform students and parents/ guardians of any changes.</p> </td> </tr> </table>	<p>100% -90% = A 89% - 80% = B 79% - 70% = C 69% - 60% = D 59% - 0% = F</p>	<p>*The Grading Scale is subject to change. The teacher will inform students and parents/ guardians of any changes.</p>
<p>100% -90% = A 89% - 80% = B 79% - 70% = C 69% - 60% = D 59% - 0% = F</p>	<p>*The Grading Scale is subject to change. The teacher will inform students and parents/ guardians of any changes.</p>		
<p>Materials:</p>	<p>Students are recommended to have the following material for class:</p> <ol style="list-style-type: none"> a. Fully charged laptop or tablet b. Number 2 pencils/ mechanical pencils c. Lined paper d. Highlighters e. Agenda 		

Communication Platforms:



Remind

Please sign up to receive notifications. Only one number per household is necessary.



Google Voice

You may text or call me at (559) 691-4925 any day from 3:10-4:00 p.m. If I do not respond, please leave a detailed message that includes your number and name (student and parent). I will do my best to respond to you as soon as possible

Instagram

Students and parents can also follow me @historywithmrs.sweeney for more class updates.

Mrs. Sweeney's Website:



Announcements, resources, and important links can be found on my website:

<https://www.fresnou.org/schools/scandinavian/history/Pages/Sweeney.aspx>

Scandinavian Middle School is a “place of learning”. We have an educational philosophy that all students have the right to learn, and all teachers have the right to teach. We strive to provide optimal learning opportunities for all students; therefore, students are expected to adhere to all classroom and school rules, expectations, and procedures. Teachers and staff will reinforce positive behavior and students will be rewarded for good citizenship monthly and quarterly. Students who do not honor the

<p><i>Assertive Discipline Program:</i></p>	<p>Scandinavian Student Expectations will be dealt with in a fair and timely manner with the following behavior procedures and consequences:</p> <p><u>Level 1 Mild Behavior Infraction</u></p> <p>1) Teacher uses corrective responses to assist child with behavior in class. 2) Parent contact and intervention/consequence given by teacher.</p> <p><u>Level 2 Moderate Behavior Infraction</u></p> <p>1) Teacher uses repeated response techniques to correct student behavior in class. 2) Documentation referral sent to administration. Consequence/intervention plan developed within a timely manner (24 hours). 3) Parent contact. 4) Possible referral to Response to Intervention Team (RTI).</p> <p><u>Level 3 Severe Behavior Infraction (Illegal behavior, physically dangerous, overt defiance)</u></p> <p>1) Immediate referral to administration. 2) Administrative consequences given.</p>
--	---

Contact Information: I can be reached by e-mail at marilyn.hernandez@fresnounified.org or by phone at (559) 691-4925.

Parent – Student – Teacher Agreement Letter

By signing the space below the student and parent/ guardian agree that they have both read and discussed this United States History Class Description

Parent/Guardian Printed	Parent/Guardian	Date

Student name and ID Number Printed	Student Signature	Date